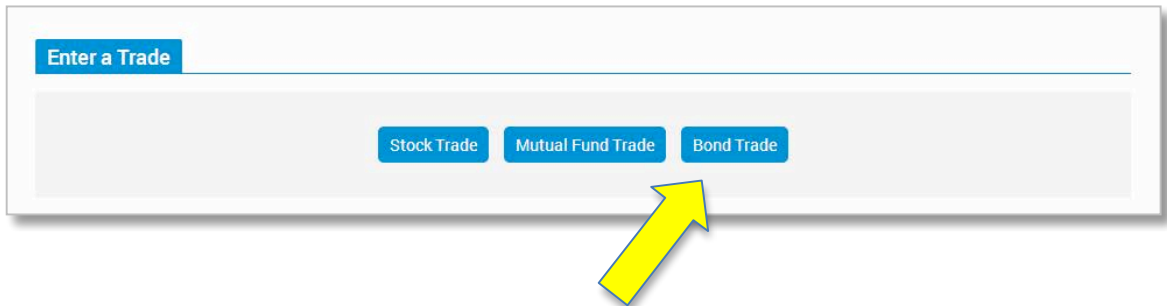


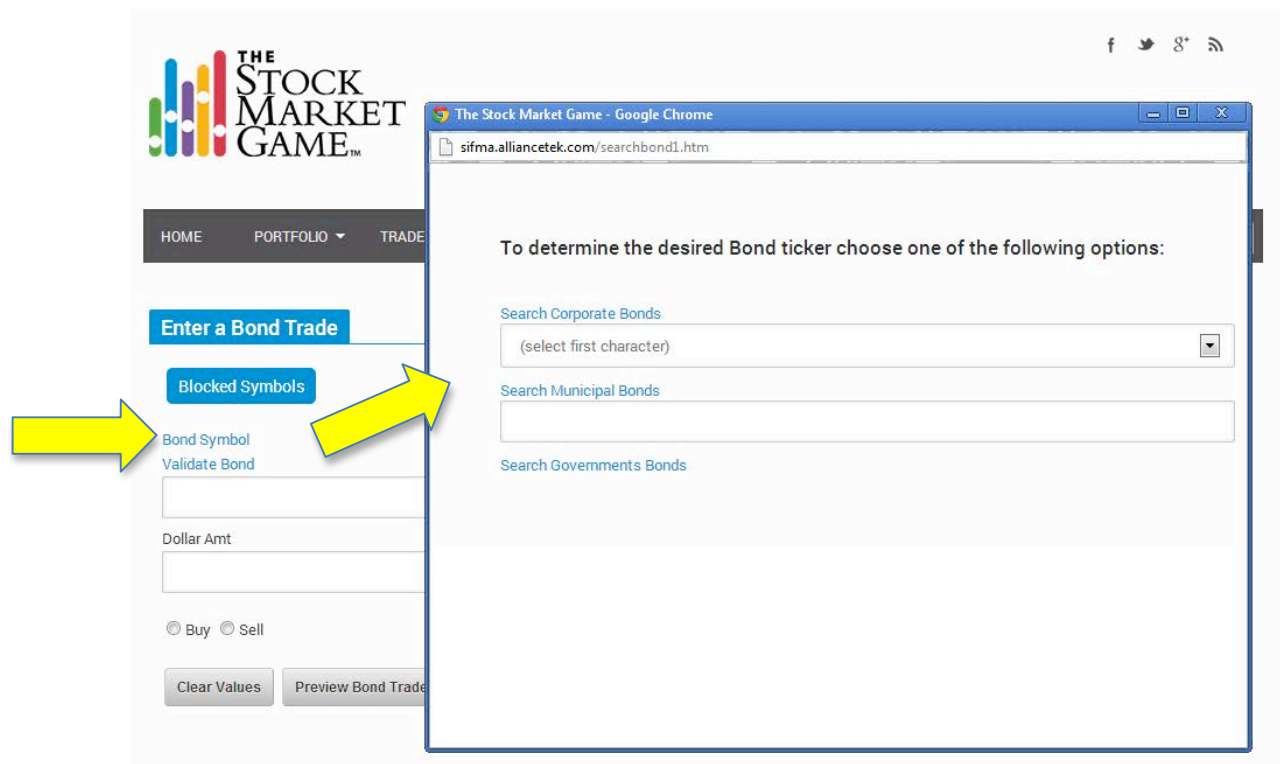
## Buying Bonds the SMG Way



Select Bond Trade from the **Enter A Trade** page.

On the **Bond Trade** screen, click Bond Symbol to open a pop-up window. This window asks you "To determine the desired Bond ticker..."

Decide the type of bond you want to buy: Corporate, Municipal, or Treasuries.



## Buying Corporate & Treasury Bonds

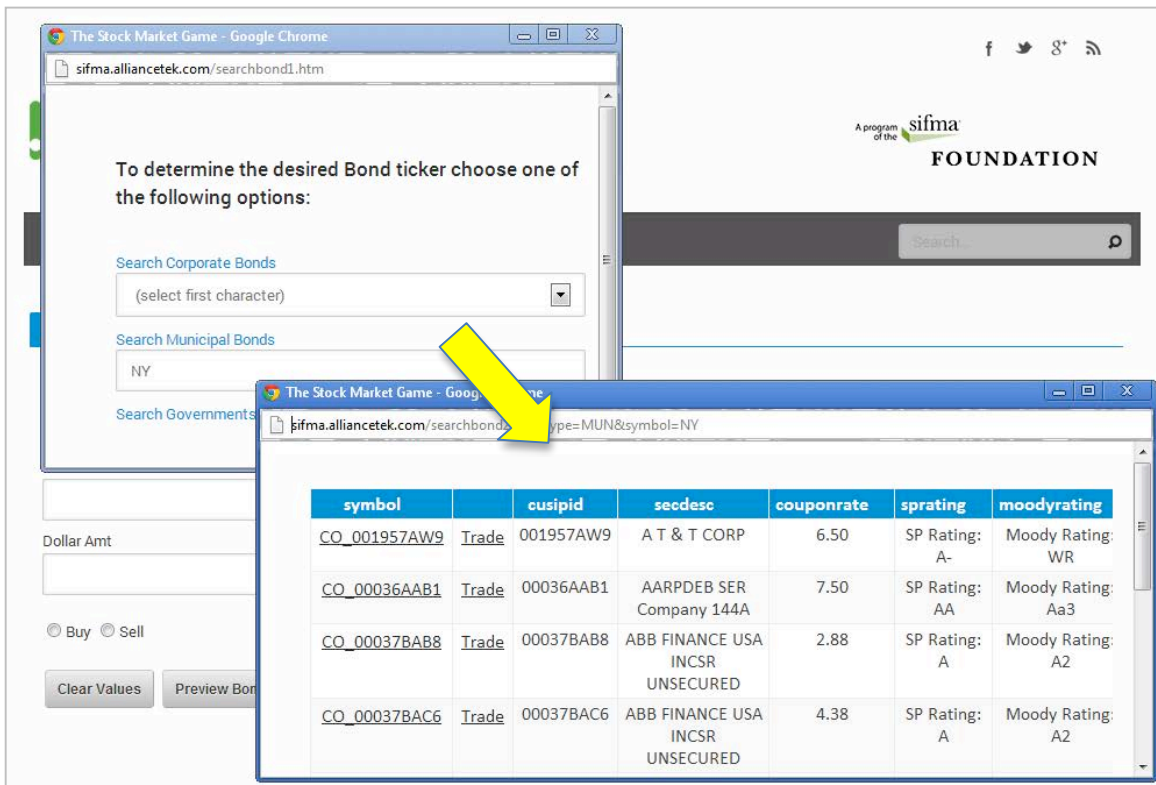
To buy a corporate bond select the first initial of the company issuing the bond from the drop down menu and then click Search Corporate Bonds. Click the 12-character SMG ticker to the left of a bond to see its quote. Click Trade to buy the bond.

To buy a Treasury bond, select the agency issuing the bond from the drop down menu and then click Search Treasuries. Click the 12-character Symbol to the left of a bond to see its quote. Click Trade to buy the bond.

## Buying Municipal Bonds

To buy a municipal bond, enter the state who has issued the bonds you wish to buy and then click Search Municipal Bonds.

Click the 12-character SMG ticker to the left of a bond to see its quote. Click Trade to buy the bond.



The screenshot shows the SIFMA Foundation website interface. The main search area has three options: 'Search Corporate Bonds', 'Search Municipal Bonds', and 'Search Governments'. The 'Search Municipal Bonds' dropdown menu is open, showing 'NY' as the selected state. A yellow arrow points from this dropdown to a secondary browser window that displays search results for 'type=MUN&symbol=NY'.

symbol		cusipid	secdesc	couponrate	sprating	moodyrating
<a href="#">CO_001957AW9</a>	Trade	001957AW9	A T & T CORP	6.50	SP Rating: A-	Moody Rating: WR
<a href="#">CO_00036AAB1</a>	Trade	00036AAB1	AARPDEB SER Company 144A	7.50	SP Rating: AA	Moody Rating: Aa3
<a href="#">CO_00037BAB8</a>	Trade	00037BAB8	ABB FINANCE USA INCSR UNSECURED	2.88	SP Rating: A	Moody Rating: A2
<a href="#">CO_00037BAC6</a>	Trade	00037BAC6	ABB FINANCE USA INCSR UNSECURED	4.38	SP Rating: A	Moody Rating: A2